



REMIX REALITY

2023/2024

GOODMAN THEATRE ANNUAL REPORT

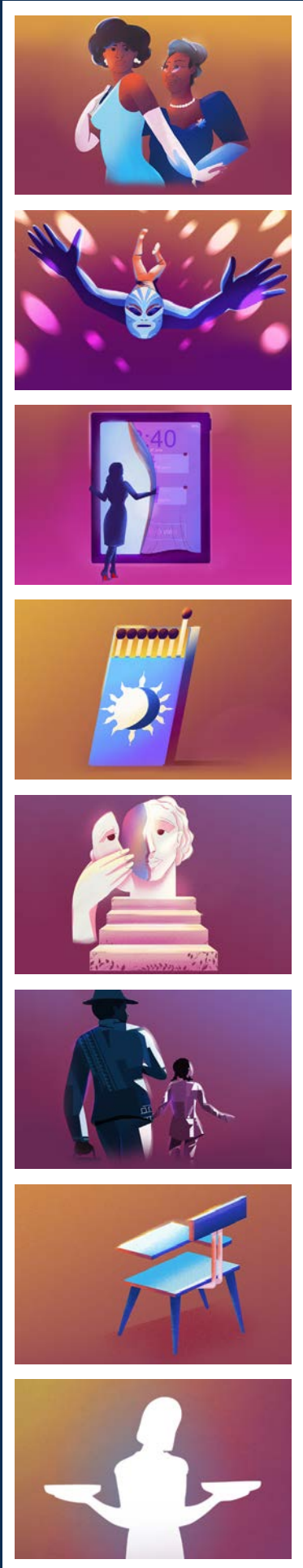
“

I want this season—and the ones that follow—to have as many open doors and windows for as many people as possible. I’m interested in deepening our work in theater for very young audiences. It’s a practice that has quantifiable effects on literacy levels for early learners, and I think it’s work we have a responsibility to provide. I’m also committed to making professional pathways for folks who’ve been underrepresented in leadership roles in our processes and organizations. And I’m

DEEPLY COMMITTED

to expanding the definition of what constitutes theater—listening to both our current audience and the one we’re seeking—as they tell us what moves them.”

—SUSAN V. BOOTH IN *CS MAGAZINE*



SUSAN V. BOOTH

ON THE PLAYS IN HER INAUGURAL SEASON AS ARTISTIC DIRECTOR

"We need to meet our audience where they are... it becomes incumbent on us, those extending that invitation, to make sure the work we're doing **FEELS ESSENTIAL.**"

—*CRAIN'S CHICAGO BUSINESS*

"I'm not interested in theater where the performance is the endgame. I'm far more interested in theater as an active catalyst in community dialogue and community healing in **EDUCATIONAL BETTERMENT.**

I believe in the power of this art form to cause things to happen to places and within people."

—*CHICAGO READER*

"Theaters must reach out to new audiences, Booth says, while believing it's possible to program for the audience you're looking for but not displace the audience you have:

'IT'S POSSIBLE TO DO BOTH

—it's not an either-or scenario. When you have scarcity thinking, you get fearful. And nobody does their best thinking when they're fearful."

—*NEW CITY*



THE 2023/2024 SEASON

IN THE ALBERT

THE NACIREMA SOCIETY

By Pearl Cleage, Directed by Lili-Anne Brown

A CHRISTMAS CAROL

By Charles Dickens, Adapted by Tom Creamer, Directed by Jessica Thebus

HIGHWAY PATROL

Playwright and Text Curator by Jen Silverman, Based on the Digital Archives of Dana Delany, Created by Dana Delany, Mike Donahue, Dane Laffrey and Jen Silverman, Directed by Mike Donahue

THE PENELOPIAD

By Margaret Atwood, Directed by Susan V. Booth

JOE TURNER'S COME AND GONE

By August Wilson, Directed by Chuck Smith

MIDNIGHT IN THE GARDEN OF GOOD AND EVIL

Book by Taylor Mac, Music and Lyrics By Jason Robert Brown, Choreography By Tanya Birl-Torres, Directed By Rob Ashford, Based on the *New York Times* Best-Selling Book By John Berendt

IN THE OWEN

LUCHA TEOTL

Written and Directed by Christopher Llewyn Ramirez and Jeff Colangelo

THE MATCHBOX MAGIC FLUTE

Adapted and Directed by Mary Zimmerman

ENGLISH

By Sanaz Toossi, Directed by Hamid Dehghani

SPECIAL EVENTS

THE LIZARD Y EL SOL

Directed by Jamal Howard and Raquel Torre

NEW STAGES FESTIVAL

Featuring works by Zayd Ayers Dohrn, Tom Morello, Stephen Helper, Bobby Rush, Karissa Murrell Myers, Lucy Thurber, Mallory Raven-Ellen Backstrom

PEARL CLEAGE FESTIVAL

Readings directed by Lauren Wells-Mann, Lydia Diamond, Ted Williams III, Ericka Ratcliff, Malkia Stampley, TaRon Patton, Mikael Burke and Daryl D. Brooks

THE SWEETEST SEASON

Native artist showcase, workshops, panels and performances featuring Native scholars, artists, designers and vendors

THE MAGIC PARLOUR

Dennis Watkins teamed up with the Goodman and Petterino's for Chicago's longest-running magic show



**"SUSAN V. BOOTH KNEW EXACTLY THE
PLAY TO START HER INAUGURAL SEASON:
THE CHICAGO PREMIERE OF PEARL
CLEAGE'S *THE NACIREMA SOCIETY*."**

—CHICAGO SUN-TIMES



The Nacirema Society
By Pearl Cleage
Directed by Lili-Anne Brown

LUCHA TEOTL
Written and Directed by
Christopher Llewyn Ramirez
and Jeff Colangelo

With its production of *LUCHA TEOTL*, Goodman Theatre marked its 5th collaboration with Chicago Latino Theater Alliance (CLATA)'s annual "Destinos" Festival—an annual, citywide showcase of our city's Latine theater artists and companies alongside top Latine artists from the U.S. and Latin America.



"FOR LUCHA LIBRE DIEHARDS AND NEWBIES ALIKE, GOODMAN THEATRE'S MULTIFACETED *LUCHA TEOTL* IS IRRESISTIBLE. THE 100-MINUTE ODYSSEY THROUGH THE MEXICO-BORN SPORT/THEATER HYBRID STARRING MASKED FIGHTERS WITH TORRID BACKSTORIES AND BONE-CRUNCHING MOVES, MERGES SPORT WITH THEATER WITH FABULOUS IMPACT."

—CHICAGO SUN-TIMES

YEAR AT A GLANCE

9 MAINSTAGE PRODUCTIONS

25 SCHOOLS AND COMMUNITY PARTNERS

46TH ANNUAL PRODUCTION OF *A CHRISTMAS CAROL*

3 WORLD PREMIERES

230K PATRONS

5 PLAYS GOT THEIR FIRST OUTINGS IN FRONT OF LIVE AUDIENCES VIA THE 19TH ANNUAL NEW STAGES FESTIVAL

1 BROADWAY-BOUND NEW MUSICAL

363 PERFORMANCES



A Christmas Carol
By Charles Dickens
Adapted by Tom Creamer
Directed by Jessica Thebus

"A BRAVE DANA DELANY
MEETS A MYSTERIOUS
FAN IN THE WILDLY
RISKY, INDISPUTABLY
FASCINATING
NEW THEATRICAL
CONFESSIONAL *HIGHWAY
PATROL* AT GOODMAN
THEATRE—A MUST-SEE
FOR DELANY FANS."

—CHICAGO TRIBUNE



Highway Patrol
Playwright and Text Curator Jen Silverman
Based on the Digital Archives of Dana Delany
Created by Dana Delany, Mike Donahue,
Dane Laffrey and Jen Silverman
Directed by Mike Donahue
Presented by special arrangement
with Mark Gordon Pictures

"A BOX OF TREASURES,
A HAZE OF MARVELS, A
BANQUET OF DREAMS,
THE VERY WORD
DELIGHT ... MARY
ZIMMERMAN'S *THE
MATCHBOX MAGIC FLUTE*
IS A FEAST OF FABULOUS
SHENANIGANS!"

—CHICAGO READER



The Penelopiad
By Margaret Atwood
Directed by Susan V. Booth
Starring Jennifer Morrison

"GOODMAN THEATRE'S
MASTERFUL *PENELOPIAD*
GIVES POWERFUL VOICE TO
THE WOMEN OF 'THE ODYSSEY'
... ARTISTIC DIRECTOR
SUSAN V. BOOTH SHAPES A
PRODUCTION OF FURIOUS
IMPACT AND IMPECCABLE
ENSEMBLE WORK FROM THE
ALL-FEMALE, 13-STRONG CAST."

—CHICAGO SUN-TIMES



—CHICAGO SUN-TIMES

—DAILY HERALD



—CHICAGO TRIBUNE

**"CHUCK SMITH'S DIRECTION IS
MASTERFUL, THE CAST IS SUPERB AND
THE SHOW ITSELF IS FANTASTIC. SO GLAD
I GOT THE CHANCE TO SEE THIS SHOW!"**

—JIM K., GOODMAN PATRON



August Wilson's
Joe Turner's Come and Gone
Directed by Chuck Smith

English
By Sanaz Toossi
Directed by Hamid Dehghani



"THE PLAY WAS BRILLIANTLY
WRITTEN AND ACTED. THE WAY
THEY DEPICTED LANGUAGE WAS
SO IMAGINATIVE. ONE OF THE
BEST PLAYS I'VE SEEN THIS YEAR."

—GAIL M., GOODMAN PATRON



—CHICAGO TRIBUNE



—CHICAGO SUN-TIMES

"MIDNIGHT IN THE GARDEN OF GOOD AND EVIL MUSICAL ADAPTATION IS A PROMISING, BOLDLY UNCONVENTIONAL RETELLING ANCHORED BY STANDOUT PERFORMANCES."

—VARIETY



Midnight in the Garden of Good and Evil
Book by Taylor Mac
Music and Lyrics By Jason Robert Brown
Choreography By Tanya Birl-Torres
Directed By Rob Ashford
Based on the New York Times Best-Selling Book By John Berendt



IMPACT

In 2023/2024, Goodman Theatre welcomed more than **230,000** patrons to **360 PERFORMANCES**, 33 of which were sold out. With these figures, attendance surpassed pre-pandemic levels.

Through the Goodman's Education and Engagement programs, **10,000 YOUNG PEOPLE** and lifelong learners participated in over 100 free and low-cost engagements at the Goodman and throughout the city of Chicago.

Residents of **4,400 POSTAL CODES** were touched by Goodman programming, 129 of which were in the City of Chicago.

712 **ARTISTS, ARTISANS, TECHNICIANS AND PROFESSIONALS** were employed for their skills and creativity in bringing these projects to life, including four full-time apprentices and fellows who represent the future of the field.

5,063 **DONORS** made it possible to create this work and offer access at subsidized rates through their support.



EDUCATION AND ENGAGEMENT

21 Chicago public high schools enrolled in our School Matinee Series, allowing **59 TEACHERS** to share our productions with their **5,600 STUDENTS**.

250 community members participated in our inaugural **ACTIVATION PROGRAMMING**, 24+ hours of free, intergenerational arts programming during the month of May led by celebrated Chicago artists and educators.

2,800+

YOUNG CHILDREN AND THEIR FAMILIES gained early exposure to live theater through *The Lizard y El Sol*.

In summer 2024, *The Lizard y El Sol* brought joy and wonder to families during **24 PERFORMANCES ACROSS 12 PARKS** in Chicago through a vibrant, interactive touring production designed specifically for children aged 0-5 and their families. This enchanting bilingual play continued Goodman Theatre's tradition of bringing accessible, high-quality theater experiences to communities citywide. Building on the successes of previous outdoor productions—such as *Fannie Lou Hamer: Speak on It!*, *Zulema* and Theater for the Very Young outings including 2023's *In My Granny's Garden*—this summer's programming expanded the Goodman's commitment to engaging thousands of young audience members and their families in playful and imaginative storytelling.



The Lizard y El Sol
Directed by Jamal
Howard and Raquel Torre

NEARLY **600**
ADULTS AGED 55+
wrote, performed
and streamed
storytelling pieces
in GeNarrations.





NEARLY 50 YOUNG PEOPLE came to the Goodman in the summer months to collaborate with peers from across the city and develop themselves as artists through the PlayBuild Youth Intensive and the Musical Theater Intensive.

109 PUBLIC EVENTS gave thousands of patrons an opportunity to diver deeper into the ideas behind the plays on stage, exploring everything from the history of history and cultural significance of Lucha Libre to the pioneering leadership of women arts and culture leaders in the city of Chicago.

*Slippin' Through the Cracks:
The Blues Journey of Bobby Rush
Directed by Stephen Helper & Arminda Thomas*



SPECIAL EVENTS

Goodman Theatre presented its 19th **NEW STAGES FESTIVAL**—an annual celebration of innovative new work by some of the country's most singular and ambitious playwrights. Since New Stages' 2004 inception, more than 100 plays have been produced as developmental productions and staged readings.

REVOLUTION(S)

Book by Zayd Ayers Dohrn, Music and Lyrics by Tom Morello, Directed by Steve H. Broadnax III

SLIPPIN' THROUGH THE CRACKS: THE BLUES JOURNEY OF BOBBY RUSH

Book by Stephen Helper & Bobby Rush, Music and Lyrics by Bobby Rush, Directed by Stephen Helper & Arminda Thomas

BLACK BEAR ISLAND

Written by Karissa Murrell Myers, Directed by Henry Godinez

PERRY STREET

Written by Lucy Thurber, Directed by Thomas Sadoski

CEPHIANNE'S REFLECTION

Written by Mallory Raven-Ellen Backstrom, Directed by Malkia Stampley



“One of the biggest gifts I got from Atlanta was **Pearl Cleage**—her work (and) friendship as a colleague. I watched her plays, one after the other, open audiences up in this really remarkable way. I came here and said as much.”

—SUSAN V. BOOTH IN *CHICAGO TRIBUNE*

The **PEARL CLEAGE FESTIVAL** honored the legacy of literary excellence from one of America’s most prolific playwrights and launched Susan V. Booth’s first season as Artistic Director in a month-long citywide celebration conceived by Ms. Booth and curated by BOLD Artistic Producer Malkia Stampley.

THE NACIREMA SOCIETY

Directed by Lili-Anne Brown (Goodman Theatre)

BLUES FOR AN ALABAMA SKY

Directed by Mikael Burke (Remy Bumppo Theatre Company)

MAD AT MILES

Featuring music by Chicago West Community Music Center, directed by Daryl D. Brooks (Black Ensemble Theater)

ANGRY, RAUCOUS AND SHAMELESSLY GORGEOUS

Directed by Ericka Ratcliff (Congo Square Theatre)

A SONG FOR CORETTA

Directed by Malkia Stampley (Definition Theatre)

CHAIN A READING AND ART EXHIBIT

Directed by Ted Williams III (eta Creative Arts Foundation)

BOURBON AT THE BORDER

Directed by Lauren Wells-Mann (MPAACT)

POINTING AT THE MOON

Directed by Lydia R. Diamond (Goodman Theatre)

WHAT I LEARNED IN PARIS

Directed by TaRon Patton (Goodman Theatre)

Plus writing workshops and more!



With the **GICHIGAMIIN INDIGENOUS NATIONS MUSEUM**, the Goodman hosted the return of *The Sweetest Season*, proudly showcasing outstanding Native and Indigenous artists in the Chicagoland community.



In a ground-breaking creative collaboration, third generation magician Dennis Watkins teamed up with Goodman Theatre and Petterino's restaurant to establish a permanent home for Chicago's longest-running magic show, **THE MAGIC PARLOUR**—an intimate evening of classic magic and mind-reading previously hosted for more than a decade at the Palmer House.

NEARLY **70%**
OF THE AUDIENCE WERE
NEW TO GOODMAN
THEATRE'S DATABASE.

87% INCREASE IN
NUMBER OF GUESTS SINCE
DENNIS' FINAL YEAR AT
THE PALMER HOUSE.

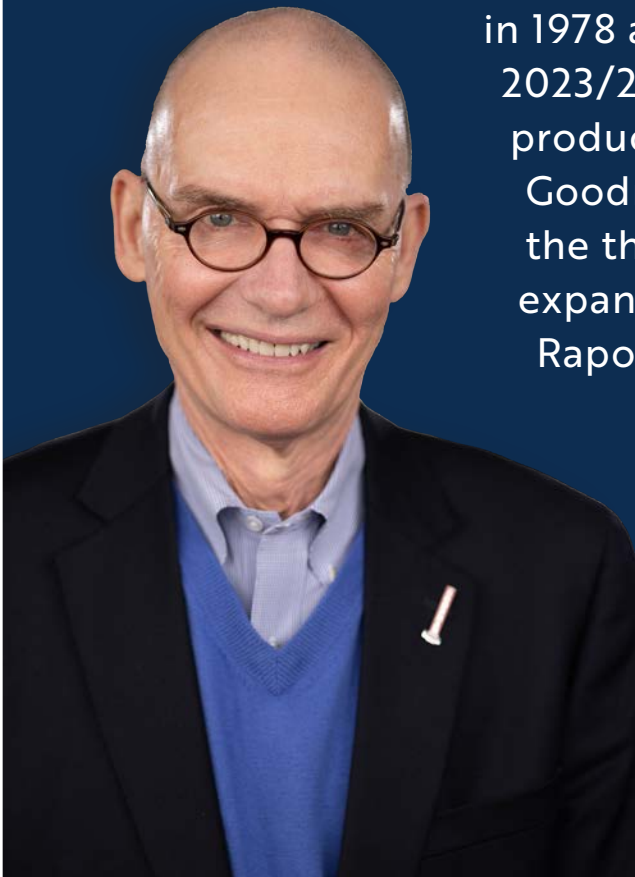
98% OF PATRONS
WOULD RECOMMEND THIS
SHOW TO OTHERS.

33% OF PATRONS
ARE DINING AT PETERINO'S.

101% INCREASE IN
REVENUE.

CONGRATULATIONS

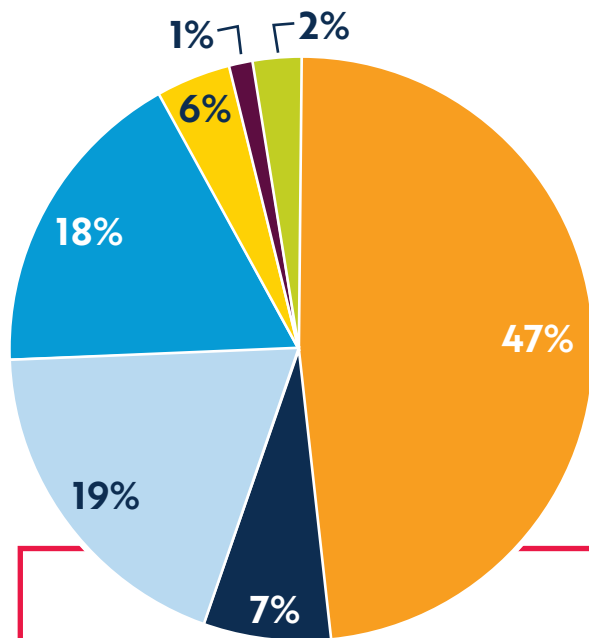
After an unparalleled, decades-long career leading executive operations for one of America's flagship theaters, **Roche Edward Schulfer** stepped down as Goodman Theatre's Executive Director/CEO at the completion of the 2023/2024 Season. His retirement followed 50 years of service at the Goodman, beginning in 1973 in the box office and serving in his current position since 1980—during which time Mr. Schulfer helped the 98-year old organization become an independent, not-for-profit resident theater company; oversaw 400+ productions (including two that earned Pulitzer Prizes and, most recently, the most successful musical in Goodman history, *The Who's TOMMY*); originated *A Christmas Carol* in 1978 as a holiday tradition that in 2023/2024 concluded its 46th annual production; and coordinated the Goodman's move to a new facility in the theater district in 2000 and the expansion in 2017 with the Alice B. Rapoport Center for Education and Engagement.



The Board of Trustees named longtime Managing Director/COO **John Collins** as Goodman Theatre's new Executive Director, beginning September 1, 2024.

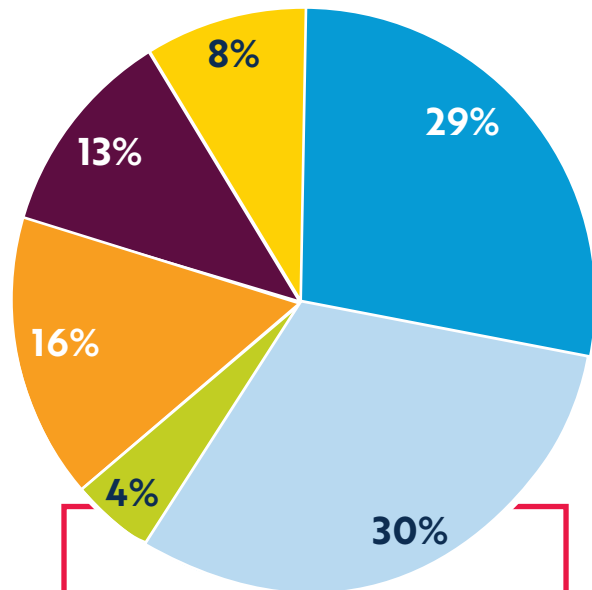
FINANCIALS

Attendance soared in strong audience response to Susan V. Booth’s first season as Goodman Theatre Artistic Director. Critical and popular acclaim for the productions and programs drove ticket sales and earned revenue to pre-pandemic levels—in spite of shifting landscapes in areas of public support. Under the leadership of Booth and Executive Director Roche Schulfer, the Goodman introduced three new major creative endeavors: *Dennis Watkins’ The Magic Parlour*, *Sweetest Season* and *Theater for the Very Young* while continuing to make a steady investment in artists, artisans, educators and staff and well as in the resources they need to be successful. The Goodman continues to rebound following the COVID-19 pandemic and navigate the realities of inflation and rising interest rates, but is buoyed by the enthusiastic response of its donors and audiences.



GOODMAN REVENUE BY SOURCE:

- 47% Ticket and Subscription Sales
- 19% Private Grants and Sponsorships
- 18% Individual Donors
- 7% Government Funding
- 6% Investments
- 2% Concessions
- 1% Rentals/Royalties/Misc.



USE OF FUNDS:

- 29% Artistic
- 30% Production
- 4% Education
- 16% Administration/Facilities
- 13% Marketing/Public Relations
- 8% Development

FINANCIALS: CONTINUED ON THE NEXT PAGE

FY24 ASSETS

Cash and cash equivalents	\$293,172
Pledges and receivables (net)	\$2,467,457
Prepaid expenses and deposits	\$989,421
Investments	\$23,075,763
Other pledges and receivables	\$3,308,208
Right to use asset	\$721,435
Property and Equipment (net)	\$24,210,079
Total Assets	\$55,065,535

FY24 LIABILITIES AND NET ASSETS

Accounts payable and accrued expenses	\$2,373,236
Contract liabilities	\$3,341,728
Operating lease	\$908,259
Line of credit	\$3,750,000
Notes payable	\$22,763,822
Total Liabilities	\$33,137,045
Net Asset without donor restriction	\$9,895,473
Net Asset with donor restriction	\$12,034,017
Total Net Assets and Liabilities	\$55,065,535

For a more thorough financial accounting, please see the Goodman's FY24 Audit, available at www.GoodmanTheatre.org/Financials

2023/2024 SEASON BOARD MEMBERS

GOODMAN THEATRE BOARD OF TRUSTEES

Chair of the Board

Julie M. Danis

Vice Chairs

Carl Jenkins
Alice Young Sabl
Kimbra Walter
Neal S. Zucker

President

Linda Coberly

Treasurer

Tod Saltzman

Vice Presidents

Kathleen Keegan Cowie
Marsha Cruzan
Fran Del Boca
Rebecca Ford
Tracy K. Healy
Elaine R. Leavenworth
Anthony F. Maggiore
Clare Metcalf
Laura Sachs
Cynthia K. Scholl
Troy Zimmerman

Secretary

Dinesh Sinniah

Immediate Past Chair

Jeffrey W. Hesse

Benefit Events

Leadership Chair

Joan E. Clifford

Honorary Chairmen

Albert Ivar Goodman

Past Chairmen

James E. Annable
Deborah A. Bricker

Joan E. Clifford

Lester N. Coney

Patricia Cox

Shawn M. Donnelley

David W. Fox Jr.

Ruth Ann M. Gillis

Sondra A. Healy

Jeffrey W. Hesse

Carol Prins

Members

Kristin Anderson-Schewe

Abbe Aron

Roger Baskes

María C. Bechily

Michael D. Belsley, Jr.

Susan V. Booth

Doug Brown

Peter C. B. Bynoe

Richard Copans

Suzette Dewey

Dhuanne Dodrill

Melissa Donaldson

Paul H. Dykstra

Kelli Garcia

Sasha Gerritson

Denise Stefan Ginascol

Henry Godinez

Linda Hutson

Brad Keck

Joe Learner

Paul Leinwand

Perry Mangione

Terri Mascherin

Laura Matalon

Thomas P. Maurer

Catherine Mouly

Dael Orlandersmith

Cara Burns Pan

Lucy K. Park

John Pintozzi

India Hixon Radfar

Elizabeth A. Raymond

John C. Robak

Gabrielle Sagers

Zoraida Sambolin

Samuel R. Scarcello

Roche Schulfer

Steve Scott

Chuck Smith

Irene Sudac

Genevieve Thiers

Judy Toland

Holly Tyson

Andrea Wainer

Lorryne Weiss

J. Randall White

Susan J. Wislow

Patrick Wood-Prince

Maria E. Wynne

Emeritus Trustees

Matthew Carter Jr.

Lamont Change

Philip B. Clement

Harry J. Harczak, Jr.

Leslie S. Hindman

H. Michael Kurzman

Amalia Perea Mahoney

Richard L. Pollay

Gigi Pritzker Pucker

Jill B. Smart

Carole David Stone

Linda B. Toops

Steve Traxler

Dia S. Weil

Eugene Zeffren

Life Trustees in bold

As of May 2024

GOODMAN THEATRE WOMEN'S BOARD

Officers

President

Lorryne Weiss

Vice Presidents

Diane Landgren
Nina Owen
Jackie Robinson

Treasurer

Heather Zimmerman

Secretary

Anne Van Wart

Committee Chairs

Education

Jill Javors
Carole Wood

Education Benefit

Diane Landgren

Jackie Robinson

Gala

Wendy Krimins
Renee Tyree

Hospitality

Teri Brown

Membership

Fran Del Boca
Nina Owen

Program

Sheila Harris
Teri Brown

Members-at-Large

Andra Press
Courtney Sherrer

Past Presidents

Joan E. Clifford

Fran Del Boca

Denise Stefan Ginascol

Sondra A. Healy

Linda Hutson

Swati Mehta

Carol Prins

Alice Young Sabl

Cynthia K. Scholl

Susan J. Wislow

Members

Sharon Angell

Elizabeth Balthrop

Kay Mabie

Sara Szold

Sustaining Members

Dr. Mildred C. Harris

Margie Janus

Mary Ann Karris

Linda Krivkovich

Honorary Members

Katherine A. Abelson

Christine Branstad

Joan M. Coppelson*

Ellen Gignilliat

Sherry John*

Gwendolyn Ritchie

Mrs. Richard A. Samuels*

Orli Staley

Carole David Stone*

Mrs. Philip L. Thomas*

Susan D. Underwood*

***Past President**

GOODMAN THEATRE SCENEMAKERS BOARD

The Scenemakers Board is an auxiliary group comprised of diverse, young professionals who support the mission of the theater through fundraising, audience development and advocacy.

President

Kelli Garcia

Vice President

Kristin Johnson Boswell

Treasurer

Christopher Way

Secretary

Deanna Deutschman

Members

Brigitte Anderson

Veronica S. Appleton

G. Philip Crean IV

Megan McCarthy Hayes

Alexander Konetzki

Meredith Kopelman-Aponte

Katie Lowes

Lindsey Lusk

Steve Mahr

Craig McCaw

Cheryl McPhilimy

Lee S. Mickus

Kristy G. Obuchowski Wallen

Eddie Patel

Della D. Richards

Sofia Romeo

Melissa Simpson

Dujon C. Smith

Priya Thennarasu

Carla Tolomeo

Stephanie D. Wagner

*** Past President**

2023/2024 SEASON BOARD ACTIVITIES

EDUCATION BENEFIT LEADERSHIP



Jared Bellot, Jackie Robinson, Joan Clifford, Diane Landgren, Susan V. Booth, Roche Schulfer, Julie Danis and Lorraine Weiss.



Featured speaker Harry Lennix.

GOODMAN GALA LEADERSHIP



Joan and Robert Clifford.



Renee Tyree, Tony Maggione and Wendy Krimins.



Kelli Garcia, Julie Danis and Lorraine Weiss.

2023/2024 SEASON SUPPORT

Institutional Support | Corporate, Foundation and Government Donors

Goodman Theatre is grateful to all of its institutional donors for their generous support. Listed below are contributors at or above the \$1,000 level.

Producers Circle **\$90,000 and above**

Paul M. Angell Family Foundation^
Helen Gurley Brown BOLD Circle^
Julius N. Frankel Foundation
Illinois Department of Commerce & Economic Opportunity
JPMorgan Chase & Co.
The Elizabeth Morse Charitable Trust^
Elizabeth Morse Genius Charitable Trust^
Northern Trust Bank
Polk Bros Foundation
The Shubert Foundation

Premiere Circle **\$30,000-\$89,999**

Abbott/Abbott Fund
Allstate Insurance Company
Bank of America
BMO

Chicago Department of Cultural Affairs & Special Events^
ComEd, an Exelon Company
Conagra Brands Foundation
Crown Family Philanthropies^
Edgerton Foundation New Play Award
Exelon
Illinois Arts Council Agency
ITW
The Joyce Foundation^
Katten Muchin Rosenman LLP
Charles & Lucille King Family Foundation^
Mayer Brown LLP
National Endowment for the Arts
PAXXUS, Inc.
PNC
Prince Charitable Trusts^
PwC LLP

Harold & Mimi Steinberg Charitable Trust
U.S. Bank Foundation
Winston & Strawn LLP

Guarantors Circle **\$10,000 – \$29,999**

Anonymous
The Buchanan Family Foundation
Chicago Latino Theater Alliance
CIBC
Cushman & Wakefield of Illinois, Inc.
The Glasser Family
John R. Halligan Charitable Fund
The Hearst Foundation, Inc.^
Irving Harris Foundation
Jenner & Block LLP
Kirkland & Ellis LLP
KPMG LLP
Make It Better
The Mayer-Rothschild Foundation

Neiman Marcus Michigan Avenue
Peoples Gas
Perkins Coie LLP
Poetry Foundation
Quaker Oats Company
Russell Reynolds Associates
Sachs Family Foundation
The Siragusa Family Foundation^
United Scrap Metal, Inc.
Weber Shandwick
White & Case LLP

Sustainers Circle **\$1,000 – \$9,999**

Edelman
Lloyd A. Fry Foundation
Gemini Graphics, Inc.
Orbit Media
Dr. Scholl Foundation
Suburban Mailing Services, Inc.
W.R. Weis Company
^Multi-year support

Individual Premiere Society and Annual Fund Donors

Goodman Theatre is grateful to all the generous donors who provide support as members of the Premiere Society, or who contribute to the Annual Fund. These individuals generate the core support for outstanding productions and award-winning Education and Engagement programs that reflect and enrich Chicago's diverse cultural community. The list below reflects annual gifts of \$500 and above.

Ovation Society **\$100,000 and above**

Joan and Robert Clifford
Carol Prins and John Hart
Alice and John Sabl
Kimbra and Mark Walter

Director's Circle **\$50,000 – \$99,999**

Julie and Roger Baskes
David Q. and Mary H. Bell
Patricia Cox
Julie M. Danis and Paul F. Donahue
Drs. Robert and Frances Del Boca

Efroymsen-Hamid Family and the Efroymsen Family Fund
Albert and Maria Goodman
James P. and Brenda S. Grusecki
Elaine R. Leavenworth
Cynthia and Michael Scholl
Lorrayne and Steve Weiss

Leadership Circle **\$25,000 – \$49,999**

Anonymous
Sharon and Charles* Angell
Susan and James Annable
Adam and Abbe Aron
Andy Atlass

Doug and Teri Brown
Richard and Ann Carr
Joyce Chelberg
Kathleen and James Cowie
Shawn M. Donnelley and Christopher M. Kelly
Paul Dykstra and Spark Cremin
Ferdinand Foundation
David and Alexandra Fox
Sasha Gerritson and Eugene Jarvis
Fruman and Marian Jacobson
Duncan Kime and Melinda McMullen
Diane Landgren

Anthony and Julianne Maggiore
Donald L. Martin II
Swati and Siddharth Mehta
Andra and Irwin Press
Pritzker Traubert Family Foundation
Elizabeth Raymond and Paul Hybel
Sachs Family Foundation
Shaw Family Supporting Organization
Ronald & Geri Yonover Foundation
Troy and Heather Zimmerman

SUPPORT: CONTINUED ON THE NEXT PAGE

Neal Zucker and Marko Iglendza

Premiere Circle
\$15,000 – \$24,999

Michael Belsley and Nina Owen

Denise Michelle Gamble

Ruth Ann M. Gillis and Michael J. McGuinnis

Denise and John Ginascol
Sheila Harris and Wallace Harris, Jr.

Linda Hutson

James A. Kochalka and Bonnie Liedman

Robert and Cheryl Kopecky

Julie and Joe Learner

Mr. and Mrs. Thomas P. Maurer*

Nancy A. Lauter & Alfred L. McDougal Charitable Fund

Catherine Mouly and LeRoy T. Carlson, Jr.

Linda and Dennis Myers & Family

Michael Steinberg and Salme Harju Steinberg

Irene and Mark Sudac

Renee L. Tyree

Audrey L. Weaver

Randy and Lisa White

Susan & Robert Wislow Charitable Foundation

Dress Circle
\$10,000 – \$14,999

Anonymous (2)

Kristin Anderson-Schewe and Robert Schewe

Elizabeth Heller Allen

John and Caroline

Ballantine

Henry and Leigh Bienen

Faye E. Blake

Linda Terry Coberly

Ms. Gwendolyn G. Cohen

Marsha Cruzan and Tom McGinnis

Generation of Giving Foundation

June and Al* Golin

Joan M. Hall

David D. Hiller

Leslie S. Hindman

Wayne and Margie Janus

Jill and Jay Javors

Ronald Bert Johnson

Ronald and Bonnie Kas
Brad Keck

Sheila and Mike Kurzman

Terri Masherin and

Thomas Abendroth

Laura Matalon and

Spencer Waller

Gary Metzner and Scott

Johnson

Lee Mickus

Constance L. Mortell

Maggie and Scott Phillips

John C. Pintozzi

Mr. and Mrs. Richard L.

Pollay

India Radfar

Jacquelyn Robinson

Samuel R. Scarcello

Linda A. Teplin

Richard and Elaine

Tinberg

Tom and Jeannie Tisbo

Judy and Alexander

Toland

Anne Van Wart and

Michael Keable

Distinguished
Guarantors
\$5,000 – \$9,999

Anonymous (3)

Jon A. Ballis P.C.

Walter and Linda Bay

María C. Bechily and Scott Hodes

Robert Bernacchi

Anita Blanchard and Martin Nesbitt

Fred and Phoebe Boelter

Susan Booth and Max

Levanthal

Christine and Paul

Branstad

Douglas R. Brown and

Rachel E. Kraft

Deborah A. Bricker

Marvin and Allison Brustin

Carol and Tom Butler

Tom and Dianne Campbell

Carol and Douglas Cohen

Lester N. Coney

Cecilia Conrad and

Llewellyn Miller

Bob and Loretta Cooney

Judy and Tapas K. Das

Gupta

Anne Megan Davis

Leonard and Patricia

Dominguez

Art and Lili Duquette

Dr. Sitaramesh and Mrs. Melissa Emani

Scott and Lenore Enloe

Christine Finzer

Rebecca Ford and Don

Terry

Kathy Frye

Meredith George

Dr. Tom and Doris

Graber*

Mary Kay and Edward

Haben

Bruce and Jamie Hague

Marcy and Harry Harczak

Sondra and Denis* Healy/

Turtle Wax, Inc.

Tracy Healy and Gregory

Beard

Ted and Dawn Helwig

Jeff Hesse

Beth Hogan-Chan and

Louis Chan

Kathy and Joe Horvath

Charles Hsu

Russell N. Johnson and

Mark D. Hudson

Elizabeth Courtney

Johnson

Nicholas* and Mary Ann

Karris

Jerry and Anna Marie Kelly

Tom Klarquist and Steve

Somora

Dietrich and Andrew

Klevorn

Robert Kohl and Clark

Pellett

Chuck and Cindy Kreisl

Wendy Krimins

Linda and Peter Krivkovich

Scott and Bobbi Lebin

Dr. Paul M. Lisnek

Jim* and Kay Mabie

The Madden Family Fund

Amalia Perea Mahoney

and William Mahoney

Donald and Maureen*

Maves

Julie and Lars Moravy

Bruce and Younghee

Ottley

Terry and Cindy Peigh

The Daniel and Genevieve

Ratner Foundation

Dave Rice Consulting

Alan Gordon Rottman

Cari and Michael Sacks

Zoraida Sambolin and

Kenny Williams

Sargent Family Foundation

David and Judy Schiffman

Richard and Cynthia

Schilsky

Roche Schulfer and Mary

Beth Fisher

Courtney Sherrer

Jill and Steve Smart

Steve and Kathleen Smith

Mr. and Mrs. Douglas

Steffen

Fred G. & Veronika

AE Steingraber Family

Trust

Judith Sugarman

Dr. Donald E. Thompson

and Kathleen Wilson

Thompson

Holly and Jeff Tyson

Ms. Gloria A. Walton

Andrea Wainer

Dia S. Weil

Graham Williams and

Ryan Rivera

Sallyan Windt

Maria E. Wynne

Guarantors
\$2,500 – \$4,999

Anonymous (3)

Dave Abrams and Cynthia

Bemis Abrams

Barbara S and Steven A

Adelman

The Evelyn Alter Family

Fund

Mr. Robert Anderson

Andy and Sue Arnold

Edgar H. Bachrach

Elizabeth Balthrop

Mr. Gustavo Bamberger

C. Barbera-Brelle

Leslie and Bill Barker

Sandra M. Bass

Anjan Asthana and Anu

Behari

Ken Belcher and Sandra

Ihm

Margaret Berger and

Michael Friedman

Dr. Lisa Betts

Shaun and Andy Block.

Tom and Marilyn Bloom

John Blosser

Douglas Bradbury

Patrick and Linda Bradley

Mitch Bramstaedt and

Paul Garbarczyk

SUPPORT: CONTINUED ON THE NEXT PAGE

Robert* and Joell
Brightfelt
Cindy Brito and
Tony Costello
In Honor of Julia White
Bundy
Jim and Barbra Butler
Linda and Peter Bynoe
Robert* and Geneva
Calloway
Ray Capitanini
Catherine Cappuzzello
and David Paul
Elizabeth Cavanaugh
Julie Cisek and Harry L.
Jones
Philip B. Clement and
Mary Ann Everlove
Clement
Mr. and Mrs. Peter Coburn
Lorren Renee Reynolds
and Joyce R. Cohen
Alexandra and William
Cole
Collens Family Fund
In Memory of Dr. W. Gene
Corley by Lynd Corley
Jeff and Leslie Cox
Phyllis Cretors
R. Bert Crossland
Mary Kate and Bob*
Cullen
John and Bonnie Dauer
Bruce and Linda DeViller
Suzette Graff Dewey
Ms. Roberta S. Dillon
Dhuanne Dodrill
In Loving Memory of
Barbara L. Downing
Jeffery DuDeVoire
David Dziedzic
Mary Ekmalian
Charles and Carol
Emmons
Rick and Dixie Erwin
Anthony and Kathleen
Filer
Brian Fippinger and Chris
Johnson
Fred and Sonja Fischer
Mr. and Mrs. Peter D.
Fischer
Jim and Yvonne Fogerty
William Fotis
Jennifer Friedes and
Steven Florsheim
Kate Friedlob
Kristen B. Garcia and
Family

The Georgantas Family
Ellen and Paul Gignilliat
James J.* and Louise R.
Glasser Fund
Ethel and Bill* Gofen
Mark Gordon Pictures
Chester Gougis and
Shelley Ochab
John and Deborah Grobe
Marie L. Gunn
Mary Hafertepe
Drs. Mildred and Herbert
Harris
Dr. Robert A. Harris
Mary Ellen Hennessy
Richard Herman
Kimberlee S. Herold
Hodge Family Fund of the
DuPage Foundation
Adam and Denise Hoeflich
Nancy and Carl Johnson
Mira and Teri Jourdan
Dolores Kadow
Dr. Claudia A. Katz
Omar, Ashraf, Hani Khalil
in memory of Hoda
Aboleneen
Hunter and Susan Kingsley
Shannon and Gene
Kinsella
Ms. Jean Kralka
Justin Kulovsek and
Damian Clark
Drs. Vinay and Raminder
Kumar
James and Pamela Learner
Richard and Debra
Learner
Wesley, Katherine,
Anthony, Valerie, Anna
Belle & Daniel Lee
Judy and Stephen Levin
Joan and Rik Lewis
Dr. Connie MacQueen
Ralph and Terrie Mannel
Stephen and Susan
Marcus
Susan and Philip Marineau
John and Etta McKenna
Jane and William
McMillan, Ph.D.
Clare and Scott Metcalf
The Micucci Family
Judi and Craig Miller
Paulette Myrie-Hodge
Lee and Sharon
Oberlander
Todd and Erin Olhms
Dan O'Neill

Linda and Jaxon Oshita
Ms. Marianne J. Parrillo
Dorothy E. Patton
Andrew and Judy L. Porte
Deborah and Stephen
Quazzo
The Rettinger Family in
Memory of Alexander
Rettinger
Alicia Reyes
Rebecca Ribaud
Sofia Romeo
Jim and Trude Roselle
Jude M. Runge-Nussbaum
Ryan Ruskin and Mike
Andrews
Angelique A. Sallas, Ph.D.
Tod and Trish Saltzman
Salvatore's Chicago
Howard and Gail Schaffner
Steven and Lauren
Scheibe
Kenneth D. Schmidt, M.D.
Steve Scott and Ted Hoerl
Elizabeth Sengupta
Renee and Michael Sichlau
Dinesh Sinniah and Anne
Norman
Mary Soleiman
Marge and Larry Sondler
Coco Soodek and
Roxanne Saylor
Neil and Eliza Stern
Scott and Arlene
Szykowny
Parle and Byron Taylor
Alison and Larry Thomas
Liisa Thomas and Stephen
Pratt
Ms. Jeanne Rochelle
Towns
Veljko Trkulja
Susan and Bob
Underwood
Ms. Vanessa J. Weathersby
Dr. and Mrs. William
Werner
Carole Wood and Carl
Jenkins
Patrick and Meredith
Wood Prince
Sandy Worley and Marc
Walfish
Benjamin and Vanessa
Wozniak
Gene and Tita Zeffren
Celebrity
\$1,000 – \$2,499
Anonymous (8)

Celia Jill Althage
Edgar H. Bachrach
In Memory of Daniel
Barnhart
William Bartley
Ronald Bauer and Michael
Spencer
The Beaubien Family
Nancy G. Becker
Robert Bernstein
William E. Bible Andrea
Billhardt
Rich Blessen
Jeneane Blom
Mr. and Mrs. Norman
Bobins, The Robert
Thomas Bobins
Foundation
Kristin Johnson Boswell
Susan D. Bowey
Michael and Kate Bradie
Lin Brehmer* & Sara Farr
K Brezill
Rick. Brickwell
Sally and Reid Brody
Dean L. and Rosemarie
Buntrock Foundation
Cara Burns Pan and
Warren Pan
Mark Cappello
Charles Carlson
Julius Carter
Sally and John Carton
Lamont and Paulette
Change
Chicago Fire Fighters
Union Local 2
Erin Clifford
Betsy and Alan Cohn
Elaine Collina
Bob Cratchit
G. Philip Crean IV and
Daniel L. Comeaux
The Honorable Barbara
Flynn Currie
C. Cwiok
Kathy and Dwight Dalton
Sally Dancer
Oscar and Melissa David
Carrie and James Davis
Mr. and Mrs. Michael David
Nancy Dehmlow
Deanna Deutschman
Douglas and Dorothy
Dirks
Ray and Mary Beth Drake
Jennifer DSouza
Diane V Dygert

SUPPORT: CONTINUED ON THE NEXT PAGE

Marci Eisenstein and John Treece
Brad and Julie Ellis
Sue Emmerick
Mr. Marvin E. Fletcher
Lewis Flint and Mary Anthony
Katie and John Fontana
Michael and Jean Franke
Dr. James and Sylvia Franklin
Albert and Suzanne Friedman/Friedman Properties
Linda D. Friedman
Robert T Friedman Foundation
Dr. Susan Fuchs
Charles Gardner and Patti Eylar
Margaret A. Gisch
Henry Godinez and Nancy Voigts
Marcia Goodman and Hiroyoshi Noto
Peter Gotsch and Jana French
Ted Grady
Linda D. and Craig C. Gannon
Adrienne & Matthew Grove
Heather M. Grove
Jack and Sandra Guthman
Kenneth and Patricia Harthun
Joe and Lisa Hartzler
Susan Harvey
Lois and Marty Hauselman
Mary Ellen Hennessy
Genevieve Hillis
James and Margot Hinchliff
The Hoovler Family
Caroline and Charlie Huebner
Tex and Susan Hull
Mr. and Mrs. Gordon Ide
Impact Networking
Josh and Kristen Jacobs
Jay Janese
Nancy and Paige Jeffrey
Jeppson's Malort
Ms. Aisha M. Jones
Tom Karaba and Marsha Hoover
The John and Bette Kayse Family
Ann Kilgast

Kenton Klaus
Electra Kontaloni
Meredith Kopelman
Mary Beth Kretz and Robert Baum
The Krishnan Fund
Erica Kuhlmann
Gabriel and Stephenie Labovitz
In Memory of Christine Larsen
Edwin Larsen & Guest
Mark Levine and Andrea Kott
Ed and Sandy Lorgeree
Mark D. Lucas
Steve Mahr and Emma Perrin
Hart Weichselbaum and Suzanne Martin
Joan and Jeremy Mattson
Russ and Anne Mayerfeld
Megan A. McCarthy Hayes
Ric D. McDonough
Karen McPartland
Kevin and Beth McMeen
John and Jeanine McShea
Mary Alice and Craig Miller
Rhonda and James Mitchell
Mr. and Mrs. Harold J. Moe
Barbara Moore
Alan and Kathryn Sheehan Nesburg
Costa Nikolaidis
Barbara and Daniel O'Keefe
Katherine and Norm* Olson
Michael O'Neal & Mary Summerfield
Gigi Owens
Mr. Gregory A. Padgett and Ms. Marie Castaneda
Ronna Page
Eddie Patel
Timothy Pattison
William and Suzan Pinsof
Louise Perrin
Julie J. & John L. Peterson
John Pfeiffer/Sergio Poldi
Mr. Daniel Polsby
Christine and Michael Pope
Arch Pounian
Owen Priestley and Lauren Traficanto
Dr. and Mrs. Richard Prinz

Gloria Pritchett - In memory of Albert Pritchett
Jeaneane and John Quinn
Ian Radomski
Bill and Gail Radzevich
Renate Reichs and Tom Schneider
Linda Johnson Rice
Misty J. Richmond
Robert Rivkin and Cindy Moelis
Mimi and Michael Roberts
Heidi Rogers
Mimi Rose - In honor of Al Rose*
Margaret Rowe
Monique and Pete Rub
Yasir & Antaash Safdar
Bettylu and Paul Saltzman
Stephan Meyer & Sharon Salveter
Fred and Pamela Sasser
Dr. Elizabeth Sengupta
David and Judith Sensibar
Lara and Marc Shiffman
Dr. and Mrs. Kenneth I. Siegel
Janice Slaughter
Sally Sloan
Dujon C. Smith
Drs. Frank and April Smith
Dr. Stuart P. Sondheimer and Bonnie Lucas
Carol Sonnenschein
Donna Spagnola and Ted Tasker
Mr. George A. Speck
Chris-Annmarie Spencer
Carol Stein Sterling and James Sterling
Jeffrey and Robin Stern
Patty Sternberg
Catherine Stewart and Geoff Smith
James Stewart and Betty Dix
Norm and Lynda Strom
Susan C. Taylor
Nasrin Thierer
Mr.* and Mrs. Philip L. Thomas
Evan Thompson
Sue and Jim Thompson
Sylvia and Paul Tufts
David and Bonita Turner
Laurie Ulrich
Dr. Michael and Kathleen Uzelac

Frank and Pamela Valderrama
Peter Vale
Henrietta Vepstas
Darlene & Mark Vesely
Janine E. Warell
Hart Weichselbaum and Suzanne Martin
Mr. and Mrs. Robert J. Wilczek
Benna and Hal Wilde
Greg and Maryl Wilensky
H. Randolph and Nancy Williams
Jaarmyia Williams
Dr. Norma E. Davis Willis
Ann Wise
Tom and Lissa Yogan
Scott Yonover
Patricia Zeglen
ZFX Inc
Star
\$500 - \$999
Anonymous (23)
Naila and Rafiq Ahmed
Alejandro M. Aixala
Rebecca Alkhas
Bernard and Angela Allen
Sandra Allen and Jim Perlow
Ms. Susan C. Alm
Mrs. John Alukos
Brigitte R. Anderson
Judith Anderson
Jacob Angel
Ms. Alona Anspach
Nancy Antunez
Veronica S. Appleton
Mitzi Appling Beebe
Earle and Kara Atwater
Richard P. and Janice G. Bail
John and Sharon Baldwin
D Barbee
Earl and Lisa Barnes
Jennifer Barth
Larry and JoAnn Baumann
William and Donna Baumgardt
Angela Bell
Dr. Janet Belsky and Sheldon Gertzfeld
Jim & Betsy Benoit
Joan I. Berger
Lina Bertuzis
Kathleen Betterman
Richard L. Bordelon
Sarah Borer
Henri Boylan

SUPPORT: CONTINUED ON THE NEXT PAGE

Therese and David
Brandenstein
Patrick and Cindy Brankin
The Brady Bunch
James D. and Judith L.
Brenner
Joseph and Giovanna Breu
Jennifer Brice
David H. Brinton
Joann Bronson
Karen Bronson
Martha Shrout Brown
Dr. Sharon Brown Haynes
Jennifer Bryant
Kay Bucksbaum
Nancy K. Bullock
Cheryl Burton
Brenda Butler
Larry Bykerk
Anthony Calzaretta
Mr. Randolph Cano
Jennifer and Kevin
Carpenter
Jack Casciato
Lori and Jerome Cataldo
Ceasefire Now
Adela Cepeda
In honor of Casey
Chapman and Shari Eklof
Susan L. Chomicz
Angie Clark
Tamar Climan
Kay Collier
Ms. Doris Coleman
Jennifer Comparoni and
Matt Bernstein
Eric L. Conley
Nancy W. Cook and Dan
Ziembo
Lawrence O. Corry
Erica Crenlon
Mark and Joni Croll
The Cunningham Family
Timothy Currie
David Curry In Memory of
George N. Kohler
Jean & Davis Curtis
Vicki Curtis and William
Siavelis
Lindsey and Steve Dani
Lyn Powrie Davidge
Brad Daughtry and Bryan
Howard
Ingrid H. Deroubaix
Mary Devries
Dana Dimitri
Scott Donoho
Elaine Donovan
Dan and Jennie Dooley

Amber Dow
Dr. Kim L. Dulaney
Eileen Dwyer and Elliott
Kroger
Teagan Earley and Sisters
First LLC
Robert Edger M.D.
Clifford Einhorn
Arista and Craig Elder
Don and Beth Eugenio
Marilynne Felderman
Kyle Fennell
Ms. Sally Fletcher
Joan Flashner
Bernadette Foley and
Richard Landgraff
Jonathon Foreman
Deborah Forman-Eichten
Mrs. Adrian Foster
State's Attorney Kim Foxx
Deborah Franks
Mable Franzoni
Mr. & Mrs. Jeffrey Freeman
Ronald Ganellen
Terri Garvin in memory of
Alethia Garvin
Barbara and Chuck Gately
Susan Mabrey Gaud
Thomas and Carole Gazda
Patricia V. Gentry
John and Jennifer Gerber
Suzanne Gerhold
Robert Gibson
Cheryl Gilhooley
Dr. Timothy Gillison by
Dr. Donald and Linda
Gillison
Margaret A. Gisch
Give Me Some Sugah
Bakery
Patricia T. Gladden
Dan and Julie Glavin
Don and Marchelle Goens
Susan M. Goldberg
Paula A. Golden
Gordon & Nancy
Goodman
Kristen Goodman
Laura Goodman
Petra Gowisnok
Patsy K. Grady
Dr. Alan Grigg and Dr.
Michael Flores
Jacquelyne Grimshaw
Ms. Thomasine L.
Gronkowski
Thomas Guenther

Maxine Fanberg
Guenther and Tom M.
Guenther
Ada M. Gugenheim
Beatrice Hall
Robert and Barbara Hall
Robert and Melanie
Halvorson
Jo Ellen and Stephen Ham
Charles R. Hammerslough
Sarah and Joel L.
Handelman
Michele Harrison
Ronne Hartfield
Kenneth and Patricia
Harthun
Chet and Beth Hartsock
Charles and Maggie
Haskins
Eloise Haverland
Dr. Sharon Brown Haynes
Maggie Hays
Hazel
Howard Heath
Raynelle F. Heidrick
Libby Fischer Hellmann
Jennifer & Frederick
Helmen
David and Mary Alice
Helms
David & Lindsey Henry
Holly Hirst & Tom
Bearrows
Robert and Kimberly
Hogan
Mary and Dermot Horgan
Michele & Mathew
Hoovler
Claudia Hueser
Austin Ryan Hunt
Denise Huntley- In
memory of Jacqueline
El-Amin
The Hanes Huske Family
Tom IrvineNasser Israel
Kathryn Anderson Janicek
Daniel Jares
Mr. Robert Jelinski and Mr.
John Haas
Barbara Jillson
Janet Johnson and Randy
Gunn
Dr. June Johnson--Chicago
BPW Metro Club
Pat and Joni Johnson
Suzette B. Johnson
Rita and Chris Johnston
Julia, Michael, Jacob, and
Lexie

The Krishnan Fund
Wendy Kabaker
Sree Kartha
Mona and John Kasper
Aviva Katzman and Morris
Mauer
Krista D. Kauper
Deborah Kermeen and
John Grochala
David Kern
Sharon and David Kessler
Helen Kim & Ron Cohen
Ann Kimberly
Ruth Kleinfeldt
Jean A. Klingenstein
Roberta Kramer
Seth Krantz and Stephanie
Linn
Richard and Annie Krzysko
Gaby Kuhn and Chuck
Marien
Ms. Michele Kurlander
Rich Kuczkowski
Rama Kumanduri &
Cristina Romero
Santiago Lacouture
Diane and Charles Laff
In Honor of Thurgood and
Mae Lane
Erica and Todd LeBlanc
Mr. and Mrs. Peter Lederer
Helen and Young Lee
Norma Lee Kerns Barnhart
and William Barnhart
Yohannan Lee
Sheila Fields Leiter
Kat linville
Laura Levy and Ulf Anvin
Ms. Beth Ann Loeb
Dawn Logas
The Lubell Family
Marguerite and Wayne
Lueptow
Alice Lyon and Daniel
Davies
Tom and Anne Lysaught
Charles Mackie and Janet
Mesic-Mackie
Ms. Delores Mann
Wendy Manning
Chuck Marias
Chris and Susan Marshall
Marjorie Martin
Carmen Maso
Herbert Z Mason Farmer's
Insurance Agency
Catherine Masters
Dr. Norman E. Masters, Jr.
Craig A. McCaw

SUPPORT: CONTINUED ON THE NEXT PAGE

A. Moriel McClerklin SCCP
 President
 Kelly McCray – In memory
 of Donald Mays
 Greta McDonald
 Arlene McFadden
 David and Maggie McGarel
 Edward and Ann
 McGrogan
 Bernadette McNicholas
 Katherine McVay
 Terry J. Medhurst
 Bill Melamed and Jamey
 Lundblad
 Mr. Ernst Melchior
 Susan Messing
 Erica Meyer
 Jamie B. Fowler and
 Pamela Milam
 Rhonda and James
 Mitchell
 MLS Mailing, Inc.
 David and Agatha Moll
 Charitable Fund
 Timothy and Debra
 Montgomery
 Simon and Carolyn Moore
 Susan Mosher
 Norene Mostkoff
 Anne Chestney Mudd
 Shirley Muller-Booker
 Chandler Myers
 Emily Nash & Lawrence
 Mabes
 Lewis Nashner and Ann
 FloresRita Nathanson &
 William Nieman
 Paul Nielson and Julie
 Knudson
 Lowell and Jackie Nelson
 Victor & Tracy Netter
 Paul Nielson and Julie
 Knudson
 Patricia O'Donnell
 Maura O'Hara
 Kirsten Olson
 Gerald L. Padbury
 Dr. Pamela Papas
 Dr. Pamela J. Parker
 Roberta and John
 Paskvalich
 Mr. and Mrs. Glenn Pawlak
 Louise Pearson
 Paula J. Pederson
 William and Suzan Pinsof
 John Poertner
 Vahe and Heather
 Poladian
 Christine and Michael
 Pope
 Arch Pounian
 Premier Arts Academy,
 Elkhart, IN
 psyCATS PC – A
 Behavioral Health
 Practice
 Leslyn Quartuccio
 Sarah Quartuccio
 Frances Radencic
 Mr. and Mrs. Clifford
 Rallins
 Barbara Rapp
 In Memory of Dr. James L.
 Rapport
 Jacqueline Ray
 Karen Ray
 RCM Alternatives
 James A. Ready, Jr.
 Dennis Regan
 ReLeaf Michigan
 Della D. Richards
 Courtney Roberts
 Mr. and Mrs. Wallace
 Robertstad
 Chloe Robinson
 Sarah and Alfred
 Rosenbloom
 Sarene Rosen
 Babette Rosenthal
 Drs Ron and Linda
 Rosenthal
 Jennifer Ross
 Gail and Dennis Rossow
 In Memory of Joseph C.
 Russo
 Kelly M. Ryan
 Nicholas Saba with
 SaveATree
 Doctors Karen & David
 Sager
 Valee and Marcus Salone
 Dr. Peter and Atour Sargon
 John Satkas
 Mary Ann and Bob Savard
 James and Mary Beth
 Schafer
 Matthew J Schaufele
 Rebecca Schmitt
 The Schmitt Family
 Stephen & Erin Schrantz
 Austin Schraudenbach
 Susan and Charles
 Schwartz
 Donald and Victoria Scott
 Nia Scott
 Gerry and Pat Sczygiel
 Catherine Sharp
 Peter Shearn
 Dr. Lemuel and Sarah
 Shaffer
 Timothy Sherck
 Caroline Sherman
 Jennifer Sherman and
 Douglas Cherry
 Irwin Shur
 Dr. and Mrs. Kenneth I.
 Siegel
 Kenneth C Simpson
 Robert M. Six
 Damon Sloan
 Mary Jo and James Slykas
 Phil and Carol Smith
 Jeffery L. Smith
 Randy and Geri Smith
 Todd Smith and Louis
 Kersten
 Mark E. Soczek
 Eileen and Edward
 Soderstrom
 Soma Design Consultants,
 Inc.
 Donna Spagnola and Ted
 Tasker
 Mr. George A. Speck
 Theresa and Edward
 Speights
 Spence Consulting, an IT
 Company
 William and Dee Dee
 Spence
 Elliot and Maureen
 Spiegel
 Joan & Charles Staples
 Waymon and Cheryl
 Starks
 Fredric and Nikki Will
 Stein
 Sylvia and Joe Stone
 Story Jam (storyjamshow.
 com)
 Sridevi Sullivan
 Donna and Paul Tanzer
 Dale Taylor
 Gladys Taylor
 Glenn and Myretta Taylor
 Margaret L. Taylor
 Rahsaan and Taria Taylor
 Dee and Ron Tevonian
 Priya Thennarasu
 Dwayne Thomas
 Eric and Jamie Thomas
 Karen Tiersky
 Pamela Toler
 Carla Tolomeo
 Phil and Sandra Tobin
 Pamela Toler
 Maria (Nena) Torres and
 Matthew Piers
 In Memory of Rosemary
 Tourville
 Marci Eisenstein and John
 Treece
 Deborah Truscott
 Barry Tubmlin
 Traci Udofia
 Urban Athlete
 Dr. Michael and Mrs.
 Kathleen Uzelac
 Reverend Booker Steven
 Vance
 Bryan Vanderhoof
 Josh, Elizabeth & Ava
 Velasquez
 Julia Velazquez Goodman
 and family
 Jurl Vinegar III
 Catherine Vollick
 Paul D. Waas
 Carol Kyros Walker
 Tyria Walton in honor of
 Mattie Walton
 Mary Warchol
 Carol J. Ward
 Michael Ward & Mynx
 Chakrawarti
 Carol Kyros Walker
 Tyria Walton in honor of
 Mattie Walton
 Patricia Watkins
 Mr. and Mrs. Robert
 Watson
 Christopher Way and Jason
 Ott
 Lydia Weber
 Dr. Anne Wells
 Tom and Mickey Wendorf
 Christopher Westbrook
 Dan and Julie Wheeler
 Kay Whitlock & John
 Leicht
 Paige Whitson-Martini
 Constance and Hugh
 Williams
 Lloyd and Fran Williams
 Mr. and Mrs. Robert J.
 Wilczek
 Gary and Modena Wilson
 Robert and Yvette Woell
 Stephen K. Woods
 Sherrie Y Wright
 Marlo Wurth
 Adriana Yanez
 Mark Yoder and Cecilia
 Cruz
 Tom and Lissa Yogan
 Anne Hines Young
 Robert Yuditsky
 Mark Zajackowski
 Jean Zuiker
 David Zwarycz

***In Memoriam**



“Thank you for your support. Your assistance helps us put on wonderful productions that allow the Chicago audience to come out and enjoy. I thank you for everything.”

—Luis “Aski” Palomino,
Wrestling Coordinator for *LUCHA TEOTL*